

## SCRIBBLES...POSSIBILITIES...& DISCOVERIES



### *Team Work*

*"Alone we can do so little; together we can do so much." -Helen Keller*

I can't claim to be a huge sports fan -except for the mighty Chicago Blackhawks! - but anyone who has worked with Sweet Peas Design knows that we are all about teamwork. Our studio would not be where it is today without the creativity and "smarts" of our senior designer, Beth Kweton, and our architectural associate, Jennifer Cioni Tarello.

These two talented women have been by my side from very early on and they are both fabulous. Beth brings a wealth of design experience and a "less-is-more" aesthetic to the studio after running her own business for many years. Together we developed the LivableLuxe style, the "little black dress of design" that defines Sweet Peas Design. We are so in tune that we finish each other's thoughts and often have the same ideas for a project. But it is just as important that we also disagree and debate over how to handle a project, because that pushes us both to new levels of creativity. Jennifer is a detail-oriented, talented space planner who makes the most of every square inch. She brings smart ideas to every floor plan: wasted space becomes a larger shower or closet, more room for storage or a larger pantry for the kitchen.

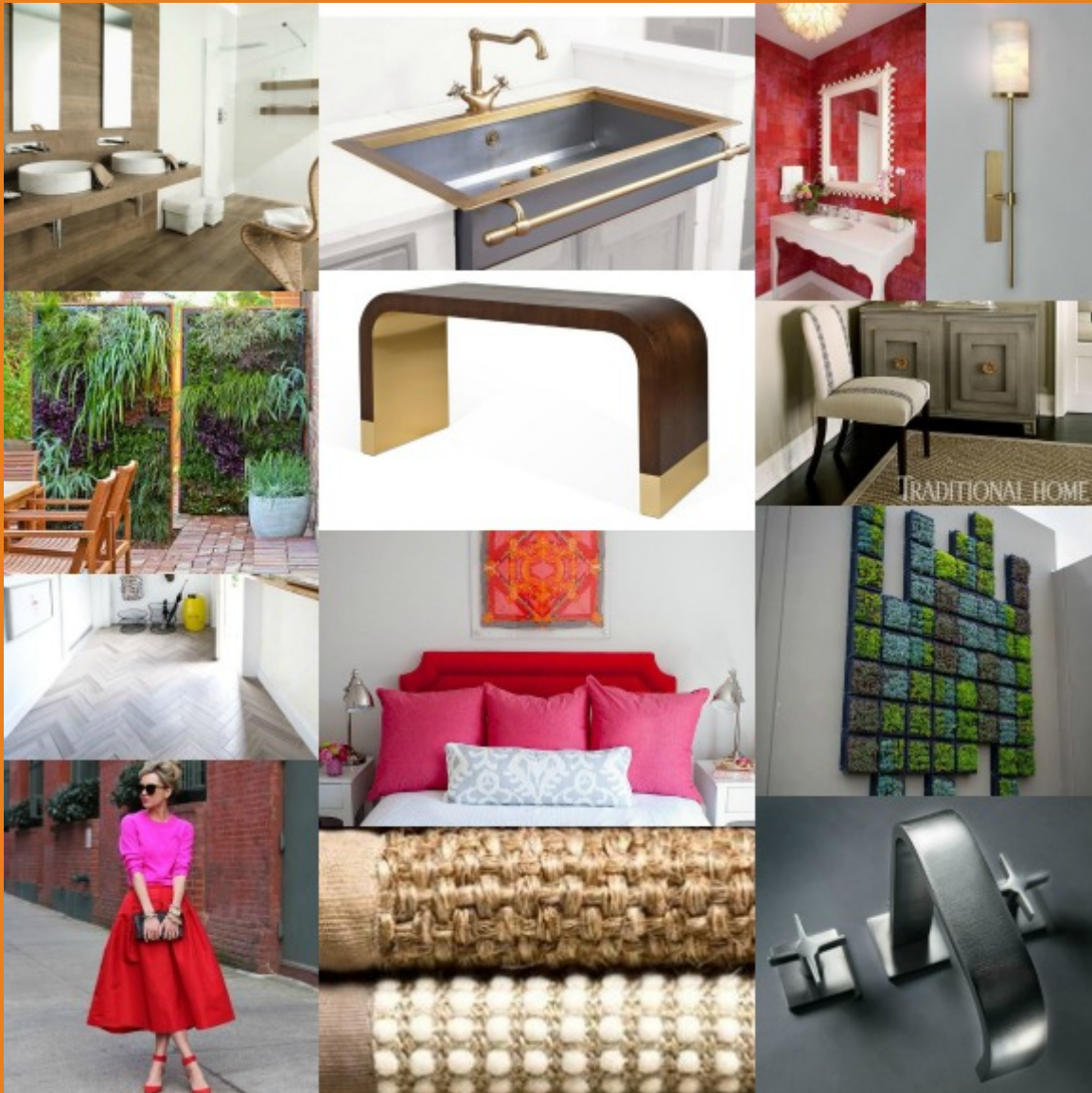
Newer to our team is financial manager Tod Snyder-Grube, whose organization and attention to detail keep everything moving forward smoothly. When your furnishings arrive on time you can thank her! Another new recruit is Lauren Benditzky, our associate designer. Lauren's fresh perspective, enthusiasm, eye for design and positive attitude are just what we hoped for.

Sweet Peas Design is now in its 12th year and we have come a long, long way. Great teams really can accomplish great things.

Sincerely,

# what's **in** what's *out*

## WHAT'S IN



**1. Satin Brass** Here's a surprise for those of you who got "brassed out" in the 80's - this gold-colored metal is making a huge comeback. We like good-quality brass with a satin finish for hardware, lighting or furniture. It is halfway between brushed and polished and has a rich, luxurious matte look.

**2. Red/Pink Color Combo** Pink and red aren't just for Valentine's Day. This bold color combo has been driving daring designs not only for interiors but fashion as well (New York

Fashion Week especially!) These rich, feminine colors are bound to make a huge impact. As a studio of all women, we love the pink-and-red trend and its girl-power attitude!

**3. Graphite Gray Appliances/Plumbing Fixtures** Gray continues its run as a trendy color for homes, fashion and hot cars. The newest hue to catch fire is graphite, an elegant choice that's dark, rich and a bit mysterious - sounds like someone we'd like to meet! Great for appliances and plumbing fixtures. Pair it with white to make it pop.

**4. Vertical Wall Gardens** "Living walls," also known as vertical gardens, earn our vote for their unusual beauty and environmental cred. Outdoor wall gardens having a cooling effect, absorb sound and provide a natural habitat for birds, butterflies and bees. Many restaurants have their own vertical herb gardens--- farm to table at its best!

**5. Sisal/Jute Rugs** Sisal rugs are everywhere. Many rooms at the Lake Forest Showhouse showcased them... even ours! They are a natural element that can be used to dress down a formal room. Jute and sisal rugs are woven in many different patterns and come in many colors. Perfect as a stair runner. We suggest adding a binding or as a rug or even wall to wall.

**6. Wood Plank Tile** We love the faux wood look in tile as it gives the natural wood look without the worry! Water-resistant, as it is either a ceramic or porcelain material, it can be used on walls or floors. And the best part? Almost any wood pattern works!

*> clockwise photos courtesy of: [floorinorlando.com](http://floorinorlando.com), [restart.it](http://restart.it), [lushome.com](http://lushome.com), [ziapriven.com](http://ziapriven.com), [traditionalhome.com](http://traditionalhome.com), [hative.com](http://hative.com), [trendir.com](http://trendir.com), [rowhousenest.com](http://rowhousenest.com), [theglamoroushousewife.com](http://theglamoroushousewife.com), [woodwayscustom.com](http://woodwayscustom.com), [yahoo.com](http://yahoo.com), [bradley-usa.com](http://bradley-usa.com), [casasugar.com](http://casasugar.com)*

## WHAT'S OUT

### *1. Complicated, high-maintenance landscaping*

- Large beds and containers of annuals, which require "dead-heading" of spent blooms.
- Fragile, fancy-pants flower species
- Weeds

sweet  
tip

### Paint Finishes

So... you've chosen the perfect paint color, but what about the finish? Flat? Matte? Eggshell or satin? Is there really a difference? And how glossy is high gloss? Have no fear, we'll share our "go-to" paint finishes and recommendations.



**FLAT (0 to 5% gloss)** Flat paint dries with zero sheen meaning it will not reflect any light. It works wonderfully to hide imperfections in a wall's surface, though it can be difficult to clean. We think flat is best for ceilings, perfectly out of reach of sticky fingers!

**MATTE (5 to 10% gloss)** Matte paint is similar to flat but a little less chalky. We like matte for walls in high traffic areas as it cleans like an eggshell but the overall look is a softer finish than flat - more like cotton. We recommend it over and over as it is kid and animal friendly.

**EGGSHELL (10 to 25% gloss)** Eggshell is our go-to for bathrooms and kitchens. It provides a silky, slight sheen finish, which has higher durability than flat paint - perfect for cooking messes and residual moisture.

**PEARL or SATIN (25 to 35% gloss)** A pearl or satin finish is best for trim and moldings. With a more reflective quality than eggshell, satin paint will highlight intricate curves in trim and window casings while still concealing brush strokes and other unsightly imperfections. It is rich and velvety, giving a nice gleam without being too dramatic.

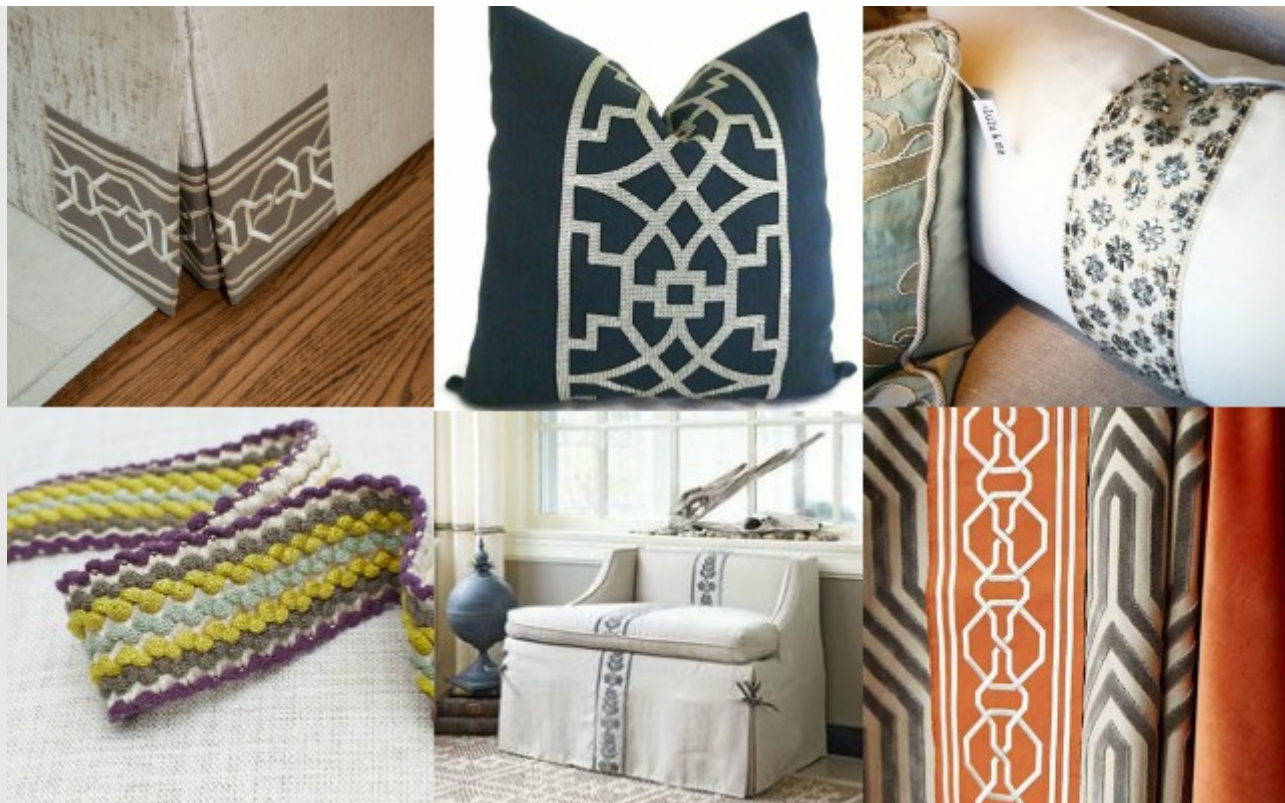
**SEMI-GLOSS (35 to 70% gloss)** Semi-gloss paint, as the name states, is subtly glossy, glamorous and buttery. It is another option for trim and moldings as it is reflective and durable and withstands light scrubbing if necessary.

**HIGH-GLOSS (70% gloss and higher)** High-gloss paint is highly luminous, almost like plastic. It is ultra-durable and can withstand heavy scrubbing. However, it will exaggerate imperfections. Only use high-gloss paint if you're prepared for extensive prep work to ensure a perfectly smooth surface!

*>photo courtesy of: Theaestate.com*

FABU FABRIC





## TRIMMINGS WITH WIDTH!

Wider is never better when it involves our "rear ends," but it definitely works when it comes to trims! Gone are the days of skinny-mini trims on pillows, upholstery or window treatments. Tapes and bands have embraced a "notice-me" scale as wide as six inches - talk about a statement! Placement is important too if you want to attract attention - think a vertical application on a chair or sofa or the leading edge of a drapery panel.

*> clockwise photos courtesy of: Sweet Peas Design, etsy.com, 'schumacher 1889' instagram account, fschumacher.com, traditionalhome.com, romo.com*

## SPOT LIGHT ON A FAVORITE

### Stools

The kitchen is the hub of any home, so it is imperative that your seating is spot on! Picking the right bar or counter stool can completely change the aesthetic of your kitchen, so ask yourself a few questions before buying: Do you prefer stools that swivel? Do you like having back support and a cushioned seat? Do they need to be kid-proof or adult-proof? Think red wine spills...



*>photos courtesy of: horchow.com, thebrightgroup.com, Sweet Peas Design via emeco.com, leeindustries.com, allan-knight.com*

At Sweet Peas Design no matter what the weather, winter or spring, rain, snow or sun we just keep getting it done...



### INVENTORY SALE

Ready to refresh your accessories? Stop by our inventory sale at the studio, 507 E. Park Avenue, from

9 AM to 5 PM Thursday, June 11,

9 AM to 2 PM Friday, June 12 and

9 AM to 2 PM Saturday, June 13

You'll discover hard-to-find vases and jars, boxes and sculptures, frames and planters, lamps and occasional tables and much more. We're happy to make suggestions!

### FREE "HOW-TO" WORKSHOP WITH SUSAN

Susan will present a workshop titled "Updating Your Kitchen without a Total Rehab" during the Highland Park Library's "How-To Fest" on Sunday, June 7, from 1:45 to 2:15 PM. Look for her in the auditorium. She is one of 40 participants at the free event which runs from noon to 4 PM, no registration required. The library is at 494 Laurel Ave., Highland Park.

### THAT'S A WRAP!

In case you missed our participation on NBC's "George to the Rescue," here is a link to the half hour show involving Waukegan artist Drew Davis and the Sweet Peas Design team. A big thank you to all the local community that helped make the Davis house a home. Bryan and Chris Davis, Peter Knowa, Nancy Schnell, Bruce Svoboda, Mike Schmidt, Neal Kaplan, Joe Bender, Anthony Saia and Fidel Ramirez.

<http://www.nbcnewyork.com/blogs/open-house/Full-Episode-A-Familys-New-Space-For-Creativity-302454221.html>

Also included is the link to Susan's "shout out" on the Meredith Vieira Show for her involvement in the project.

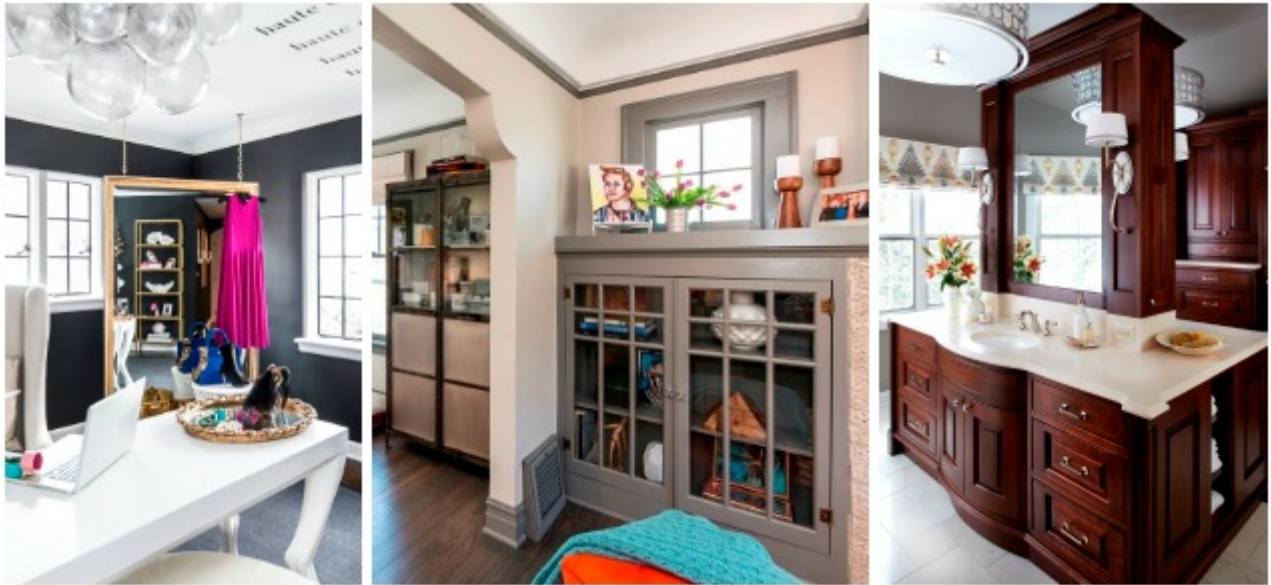
<http://meredithvieirashow.com/videos/a-heartwarming-wish-booth-update/>

SHOWHOUSE PHOTOS HERE

Didn't visit the Lake Forest Showhouse? Here is a photo of our "Fashion Blogger's Retreat." Our goals: sophistication, glam and a dash of Paris Fashion Week. Want more? Click here <http://www.sweetpeas-inspired.com/portfolio/haute-couture-> for the whole photo album! Thanks to Oly, Diego Rocha, James Sommerfeldt, Maria Pinto and Azeeza Khan and John McCarthy. A chic collaboration!

### CHRYSLIS AWARD

There's been a "spring" in our steps since we recently won a 2015 Chrysalis Award for Remodeling Excellence for one of our master bathroom renovations. Many thanks to the judges and congrats and special thanks to architectural associate Jennifer Cioni Tarello, who helped make this award possible. <http://www.sweetpeas-inspired.com/honor/spd-wins-chrysalis-award>



### NEW DESIGN NETWORK

Check us out! Sweet Peas Design has gone "live" on an exciting new Chicago-area design network called [RefinedHaystack.com](http://www.refinedhaystack.com), where design professionals, showrooms, stores and homeowners connect and collaborate. We think this is going to be a valuable tool. It gives homeowners an unprecedented insider's look at the vast design resources available in Chicago and it gives us another avenue for finding resources and vendors who can benefit our clients. You can see our page, with our portfolio, here: <http://www.refinedhaystack.com/photos/5525>

### TUNE IN TO CHAISE LOUNGE

No, we're not talking about a piece of furniture but an interview by Nick May with Susan on his website called [thechaiseloungepodcast.com](http://thechaiseloungepodcast.com). Nick focuses on the business of interior design, asking Susan about why she turned from advertising/marketing to interior design, how she has grown the business, and much more! <http://thechaiseloungepodcast.com/29-susan-brunstum-marketing-manager-turned-designer/>

### MEDIA MENTIONS

Susan's involvement in "George to the Rescue," (see above) triggered media coverage from

- the Daily Herald <http://www.dailyherald.com/article/20150420/news/150429966/> and
- the Lake County News-Sun <http://www.chicagotribune.com/suburbs/lake-county-news-sun/lifestyles/ct-Ins-waukegan-home-makeover-st-0421-20150419-story.html>



Our "Fashion Writer's Retreat" at the Lake Forest Showhouse was highlighted in

- the Daily Herald <http://www.dailyherald.com/article/20150502/entlife/150509895/>
- Crain's Chicago Business <http://www.chicagobusiness.com/article/20150507/NEWS07/150509909/design-ideas-to-steal-from-lake-forest-showhouse>
- Newcity Design, a 28-year-old weekly arts and culture website, <http://design.newcity.com/2015/05/14/showing-off-touring-the-former-home-of-john-hughes-which-is-now-the-lake-forest-showhouse/> and
- Dering Hall <http://www.deringhall.com/daily-features/contributors/dering-hall/an-inside-look-at-five-designer-rooms-in-the-lake-forest-showhouse>.

New York-based freelance writer and author Barbara Ballinger also quoted Susan in "9 Modest Fixes for the Problem Kitchen." <http://realtormag.realtor.org/home-and-design/feature/article/2015/05/9-modest-fixes-for-problem-kitchen>.

# GET THE LOOK





## High Gloss Lacquer

We love high gloss lacquer on walls, trim, ceilings and even furniture as it adds another textural element to a room. High gloss amplifies color, adds a reflective quality and enlarges a space, similar to a mirror. Lacquer is high energy too, so you might not want it in your bedroom! Remember, too, that high gloss paint magnifies imperfections, so be sure to smooth out and repair surfaces before you start, and always plan on at least two coats of paint if not three or four. Sounds like a job for a professional painter!

> *clockwise photos courtesy of: elledecor.com, sarahsarna.com, elledecor.com, littlegreennotebook.blogspot.com, Sweet Peas Design, housebeautiful.com*

### connect with us

- > **Website:** [www.sweetpeas-inspired.com](http://www.sweetpeas-inspired.com)
- > **Blog:** [www.susanbrunstrum.com](http://www.susanbrunstrum.com)
- > **Subscribe to Susan's Blog by Email**



***Care to Share? If so, please email Susan with the email addresses of those you shared this newsletter with.***

***We'd love to hear from you!***  
email [susan@sweetpeas-inspired.com](mailto:susan@sweetpeas-inspired.com)

### SWEET PEAS DESIGN

Studio  
507 East Park Avenue  
Libertyville, Illinois 60048 ([map](#))  
tel 847.816.1296

Home Office  
100 East Bellevue Place  
Chicago, Illinois 60611  
tel 312.572.9090

Sweet Peas Design, Inc., 507 E. Park Avenue, Libertyville, IL 60048

SafeUnsubscribe™ {recipient's email}

[Forward this email](#) | [Update Profile](#) | [About our service provider](#)

Sent by [susan@sweetpeas-inspired.com](mailto:susan@sweetpeas-inspired.com) in collaboration with

**Constant Contact®** 

Try it free today